

LEADERSHIP U FOR  
**HUMANITY**

*AN OVERVIEW*



# LEADERSHIP U FOR **HUMANITY**

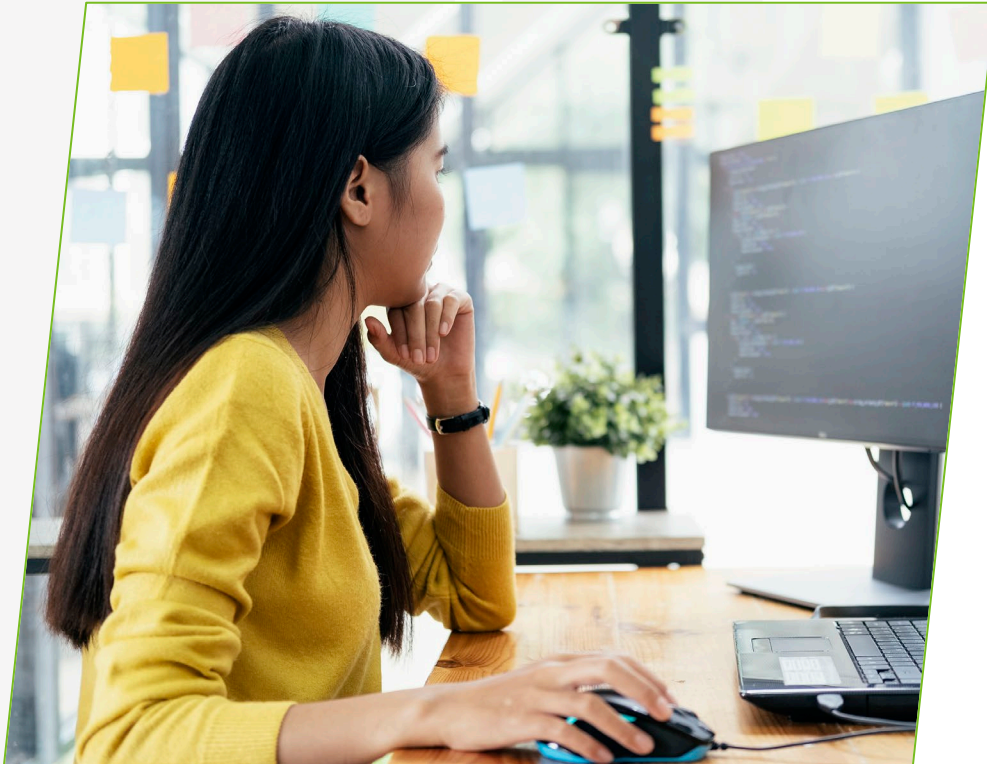
LUFH is a cohort-based leadership development program focused on empowering diverse professionals to reach their full potential as leaders.

It is an initiative of the Korn Ferry Charitable Foundation, a 501(c)(3) non-profit organization.





# Leadership U for Humanity Profile



- 4-15 or 16-30 years of professional experience and/or 3-15 years of managerial experience
- Have a wide range of life experiences, including experiences of overcoming adversity and/or a demonstrated commitment to inclusion or community. Eligibility is not restricted on the basis of race or any other protected category.
- Nominated by one of our community partners

# Community Partners that nominate Participants to join LUFH



# LUFH Program Components

Live Leadership Courses



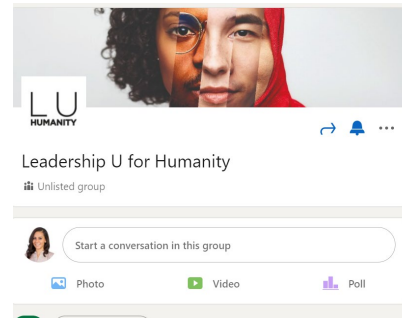
Live, virtual classroom sessions with Korn Ferry facilitators based on Korn Ferry's leadership development content.

Monthly Career Coaching



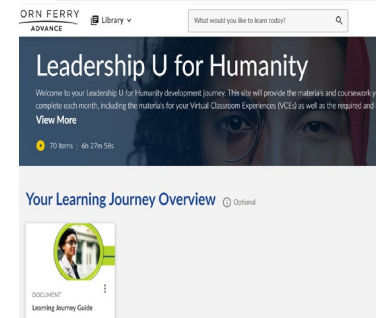
Get access to monthly 45-minute **one-on-one coaching sessions, for 6 months**, to dive deeper into your career journey and development.

Peer to Peer Networking & Events



Invitations to lunch-and-learns, an **exclusive LinkedIn group**, and other virtual networking events for social learning.

Open Learning Content Library



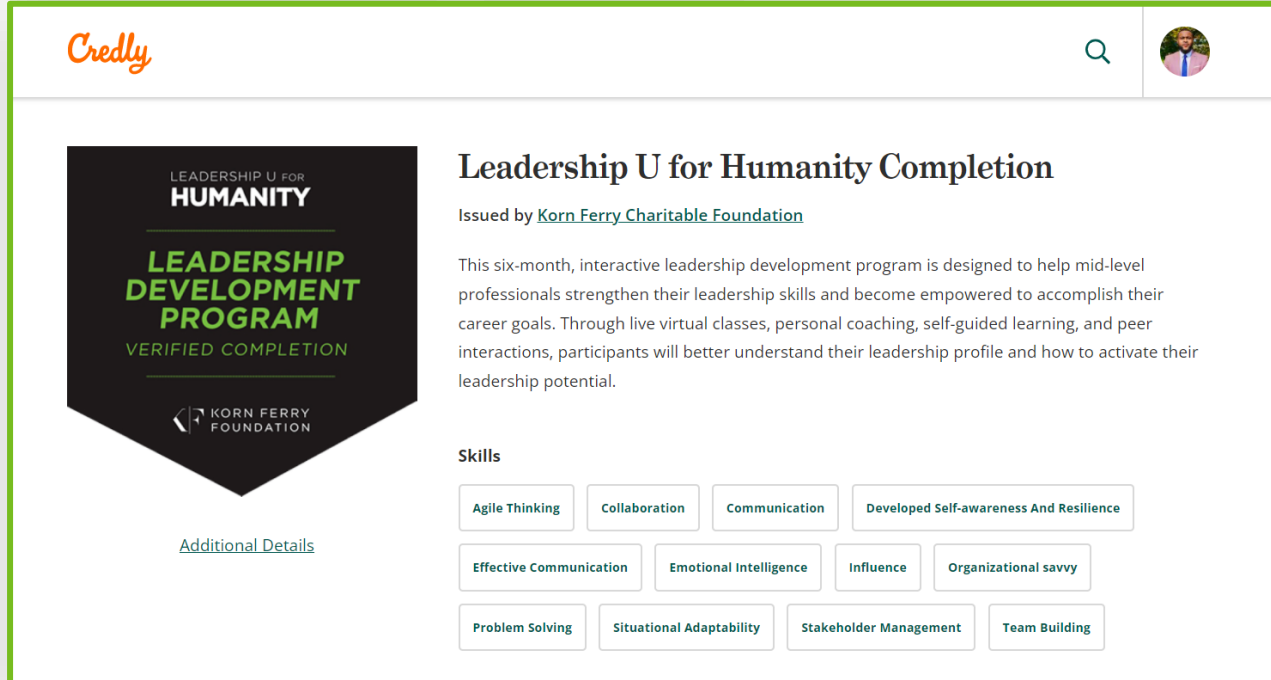
12 months of open access to our learning platform and library with **thousands of self-paced content** on vast topics related to your career.

Science-Based Assessment



Define what success means for you by taking a **Korn Ferry Assessment**. Learn more about your skills, strengths and areas to improve.

# Credly Digital Completion Badge



The screenshot shows a Credly profile page for a digital completion badge. The badge is a dark shield-shaped graphic with the text: "LEADERSHIP U FOR HUMANITY", "LEADERSHIP DEVELOPMENT PROGRAM", "VERIFIED COMPLETION", and the Korn Ferry Foundation logo. To the right of the badge, the title "Leadership U for Humanity Completion" is displayed, followed by "Issued by Korn Ferry Charitable Foundation". A descriptive paragraph states: "This six-month, interactive leadership development program is designed to help mid-level professionals strengthen their leadership skills and become empowered to accomplish their career goals. Through live virtual classes, personal coaching, self-guided learning, and peer interactions, participants will better understand their leadership profile and how to activate their leadership potential." Below the description, a "Skills" section lists 12 skills in individual boxes: Agile Thinking, Collaboration, Communication, Developed Self-awareness And Resilience, Effective Communication, Emotional Intelligence, Influence, Organizational savvy, Problem Solving, Situational Adaptability, Stakeholder Management, and Team Building. A link for "Additional Details" is located below the badge image.

**Upon successful completion, graduates are issued Credly digital completion badges.**

Our LUFH digital certificate is linked to the specific skills acquired during the LUFH program, to be used on social networks and other opportunities.