



OUT & EQUAL  
WORKPLACE ADVOCATES

**GET THE LATEST  
UPDATES ON  
SUMMIT!**

2018 WORKPLACE SUMMIT  
**KICK-OFF CALL!**

# WELCOME TO OUT & EQUAL'S 2018 SUMMIT KICK-OFF

.....

This is a Broadcast Audio call from 12pm - 1pm Pacific  
Use speakers or headsets on your computer & turn the volume up!  
Chat in questions & respond to polls during the call

Having problems streaming audio?

**U.S. Toll: 303.248.0285  
& enter access code 6946521**

This session will be recorded & available after the call ends

# WELCOME

---



**Erin Uritus**

Chief Executive Officer  
Out & Equal Workplace Advocates

#OESummit | @outandequal

OUT & EQUAL  
WORKPLACE ADVOCATES



# INTRODUCING SUMMIT 2018

---



**Kiera Jackson**

Senior Events Manager  
Out & Equal Workplace Advocates

#OESummit | @outandequal

OUT & EQUAL  
WORKPLACE ADVOCATES

# AGENDA OVERVIEW

---

- ▶ How to Use & Share this Call
- ▶ What's New in 2018
- ▶ Key Locations & Dates
- ▶ Registration
- ▶ Housing
- ▶ Sponsorship
- ▶ Workshops
- ▶ Outies
- ▶ Q & A



#OESummit | @outandequal

# HOW TO USE & SHARE THIS CALL

---

- ▶ Archived: [outandequal.org/event/2018Summit](https://outandequal.org/event/2018Summit)
- ▶ Reference Point for:
  - ⌘ Key Dates
  - ⌘ Registration information
  - ⌘ Workshops
  - ⌘ Outie Awards
- ▶ Consider sharing with your company's Summit Planning Team



#OESummit | @outandequal



# WHAT'S NEW?



**We're in Seattle!**



**Advanced Track  
for Summit Veterans**



**Fun Run/Walk**



**Mass Participation for  
Power Lunch Plenary**



**Focus on  
Intersectionality**

#OESummit | @outandequal

OUT & EQUAL  
WORKPLACE ADVOCATES

# KEY LOCATIONS & DATES

---

- ▶ Washington State Convention Center | Seattle
- ▶ May 18 | Workshop Submission Deadline
- ▶ June 1 | Outie Nomination Deadline
- ▶ June 13 | Early Bird Registration Ends
- ▶ July 27 | Exhibit Hall Booth Deadline
- ▶ September 14 | Registration Rate Change
- ▶ October 1 | Leadership Day
- ▶ October 2 - 4 | Out & Equal Workplace Summit



#OESummit | @outandequal



# INTRODUCING SUMMIT REGISTRATION

---



**Analicia Hawkins**

Senior Events Associate  
Out & Equal Workplace Advocates

#OESummit | @outandequal

OUT & EQUAL  
WORKPLACE ADVOCATES

# REGISTRATION RATES

---

## Full Conference 3 - Day Package

- ▶ Standard Early Bird: \$1,550
- ▶ Government Early Bird: \$900
- ▶ Presenter Early Bird: \$700

## Leadership Day

- ▶ Standard Early Bird: \$225
- ▶ Government Early Bird: \$175
- ▶ Presenter Early Bird: \$150

Thursday Only Early Bird: \$700

Gala Dinner Only Early Bird: \$250

### **Early Bird Rate:**

Open Now - June 13th

### **Regular Rate:**

June 14th - September 14th

### **Final Rate:**

September 15th - October 1st



#OESummit | @outandequal

OUT & EQUAL  
WORKPLACE ADVOCATES



# OUT & EQUAL

## 2018 WORKPLACE SUMMIT

Welcome

Attendee  
Information

Registration Record

### 2018 Out & Equal Workplace Summit Registration

Email Address\*

Discount Code

(If you have been given a discount code please enter it here)

Please select from the following options:\*

- ☐ Standard Attendee
- ☐ Exhibitor Only [\[More Info\]](#)

Continue

\* = Required Field





# OUT & EQUAL

## 2018 WORKPLACE SUMMIT

[Welcome](#)[Attendee  
Information](#)[Ticketed Events](#)[Additional  
Attendees](#)[Registration Record](#)

\* = Required Field

Please select from the following options:\*

- ☐ Full Conference \$1,550.00 [\[More Info\]](#)
- ☐ Full Conference + Leadership Day \$1,775.00 [\[More Info\]](#)
- ☐ Leadership Day Only \$225.00 [\[More Info\]](#)
- ☐ Thursday Only \$700.00 [\[More Info\]](#)
- ☐ Gala Dinner Only \$250.00 [\[More Info\]](#)

Continue

Powered by  
**etouches**

# OUT & EQUAL

## 2018 WORKPLACE SUMMIT

[Welcome](#)[Attendee  
Information](#)[Ticketed Events](#)[Additional  
Attendees](#)[Registration Record](#)

\* = Required Field

### October 1, 2018

7:00 pm - 10:00 pm ☐ Global Dinner \$75.00 [\[More Info\]](#)

### October 3, 2018

9:00 am - 10:00 am [\[Clear Selection\]](#)  
☐ HR Leadership Breakfast \$50.00 [\[More Info\]](#)  
☐ Women's Leadership Breakfast \$50.00 [\[More Info\]](#)

### October 4, 2018

9:00 am - 10:00 am ☐ Government Leadership Breakfast [\[More Info\]](#)





# Leadership Day Courses

## Morning Session (9am-12.30pm)

Please select the course which you would like to attend. [\[Clear Selection\]](#)\*

- ☐ Global Leadership in LGBT Diversity & Inclusion (Part 1 of 2)
- ☐ LGBT Diversity & Inclusion Leadership in the Government Sector (Part 1 of 2)
- ☐ Leadership Development for your ERGs Early Years
- ☐ Leadership Development for Allies and Advocates
- ☐ LGBT Recruitment and Executive Promotion
- ☐ Building Trans Leadership
- ☐ I will not be attending a morning session

## Afternoon Session (1.30pm - 5pm)

Please select the course which you would like to attend. [\[Clear Selection\]](#)\*

- ☐ Global Leadership in LGBT Diversity & Inclusion (Part 2 of 2)
- ☐ LGBT Diversity & Inclusion Leadership in the Government Sector (Part 2 of 2)
- ☐ Leadership in BRGs and Advanced ERGs
- ☐ Developing an Ally Engagement Strategy
- ☐ LGBT Leadership in the New Administration
- ☐ Developing Trans Policy & Culture in Your Company
- ☐ Unconscious Bias
- ☐ I will not be attending an afternoon session





# REGISTRATION OPEN

---

- ▶ Registration is now OPEN - link to register can be found on our website: [www.outandequal.org](http://www.outandequal.org)
- ▶ Summit FAQ is also available: <http://outandequal.org/workplace-summit-faqs/>
- ▶ For questions or if you would like to register a group of more than 10 attendees, please contact [registration@outandequal.org](mailto:registration@outandequal.org)



#OESummit | @outandequal

OUT & EQUAL  
WORKPLACE ADVOCATES

# SUMMIT HOUSING

---



**The Sheraton**



**The Westin**

- ▶ Crowne Plaza
- ▶ Renaissance Seattle
- ▶ W Seattle

- ▶ Fairmont Olympic
- ▶ The Paramount
- ▶ Hilton Seattle

- ▶ Hilton Garden Inn
- ▶ Grand Hyatt
- ▶ Hyatt at Olive 8



#OESummit | @outandequal



# BOOKING PROCESS

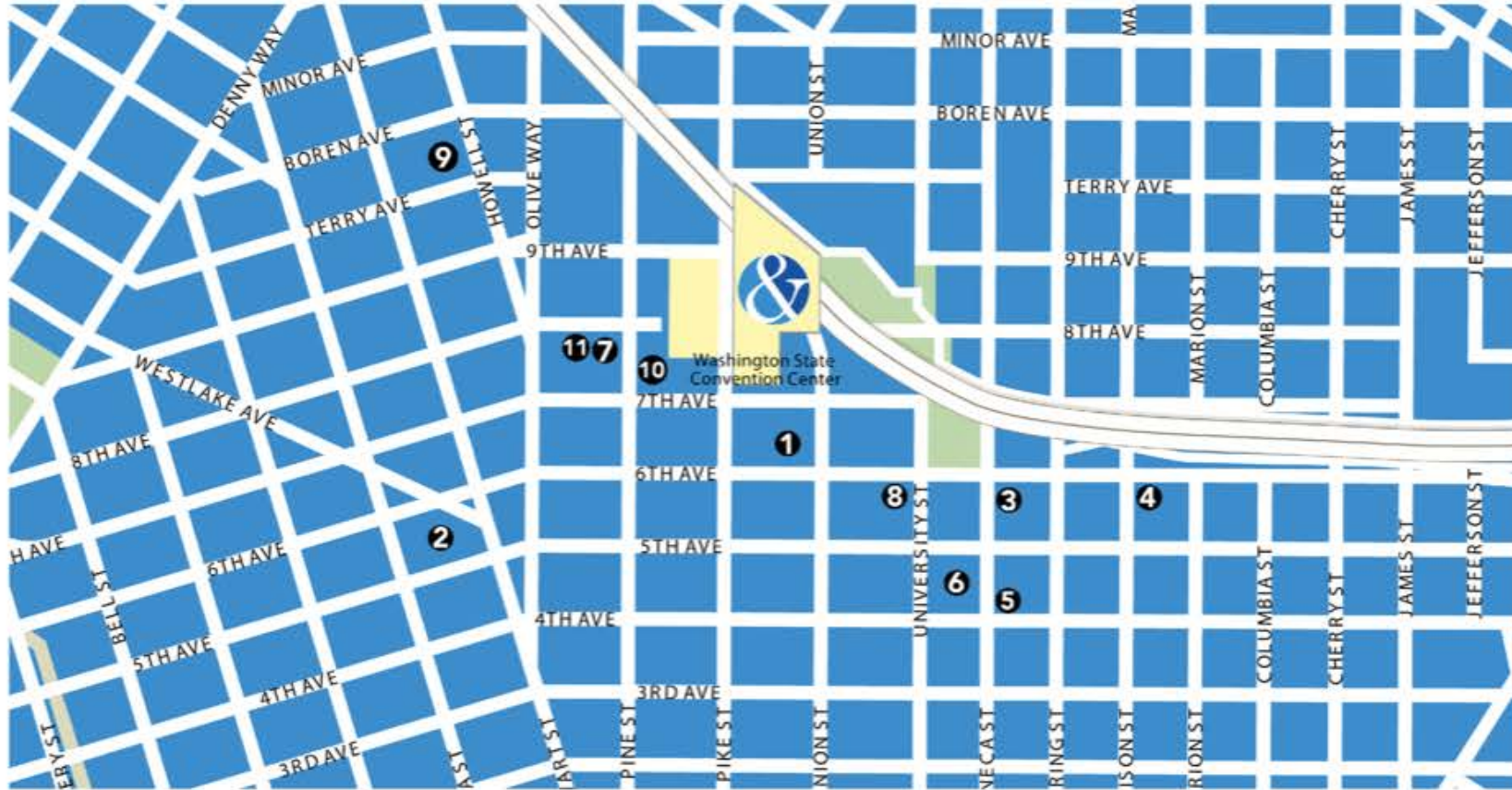
---

- ▶ **Link to book:**  
**<http://outandequal.org/2018-workplace-summit-housing/>**
- ▶ Rooms vary by property
- ▶ Limited number of Government rooms
- ▶ Delegations exceeding 10 people can request a group housing block managed by Out & Equal
- ▶ Contact Tony Talbot, Out & Equal CFO:  
**[ttalbot@outandequal.org](mailto:ttalbot@outandequal.org)**



#OESummit | @outandequal





1. **Sheraton Seattle**  
1400 6th Ave

2. **The Westin Seattle**  
1900 5th Ave

3. **Crowne Plaza**  
1113 6th Ave

4. **Renaissance Seattle**  
515 Madison St

5. **W Seattle**  
1112 4th Ave

6. **Fairmont Olympic**  
411 University St

7. **The Paramount**  
724 Pine St

8. **Hilton Seattle**  
1301 6th Ave

9. **Hilton Garden Inn**  
1821 Boren Ave

10. **Grand Hyatt**  
721 Pine St

11. **Hyatt at Olive 8**  
1635 8th Ave



# SPONSORSHIP

---



**Stephen Huey**

Senior Director of Corporate Engagement

[shuey@outandequal.org](mailto:shuey@outandequal.org)

Out & Equal Workplace Advocates



**Alyssa Jarvis**

Corporate Engagement Manager

[ajarvis@outandequal.org](mailto:ajarvis@outandequal.org)

Out & Equal Workplace Advocates

#OESummit | @outandequal

OUT & EQUAL  
WORKPLACE ADVOCATES

# THANK YOU TO OUR SPONSORS

## HOST CITY SPONSOR

---



## PRESENTING SPONSORS

---

**Bank of America.**



The *WALT DISNEY* Company



## GOLD SPONSORS

---



Altria

**Deloitte.**



HSBC



**TOYOTA**



## CHAMPION SPONSORS

---

**citi**

**CNA**

**indeed**

JPMORGAN CHASE & Co.

 **MGM RESORTS**  
INTERNATIONAL®



**ORACLE®**

 **State Farm®**

T.RowePrice 

 **TEXAS**  
**INSTRUMENTS**

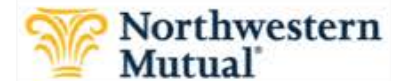
 **THE CLOROX COMPANY**

**TRAVELERS** 

**Whirlpool™**

# ADVOCATE SPONSORS

---



# PREMIER SPONSORS

---





# OUT & EQUAL WORKPLACE SUMMIT

SEATTLE, WA | OCTOBER 1 - 4, 2018

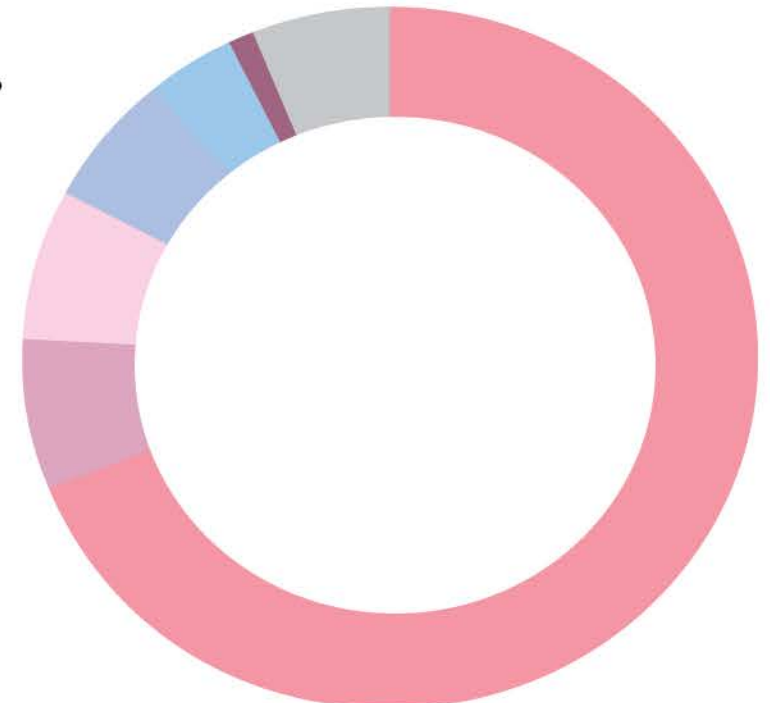
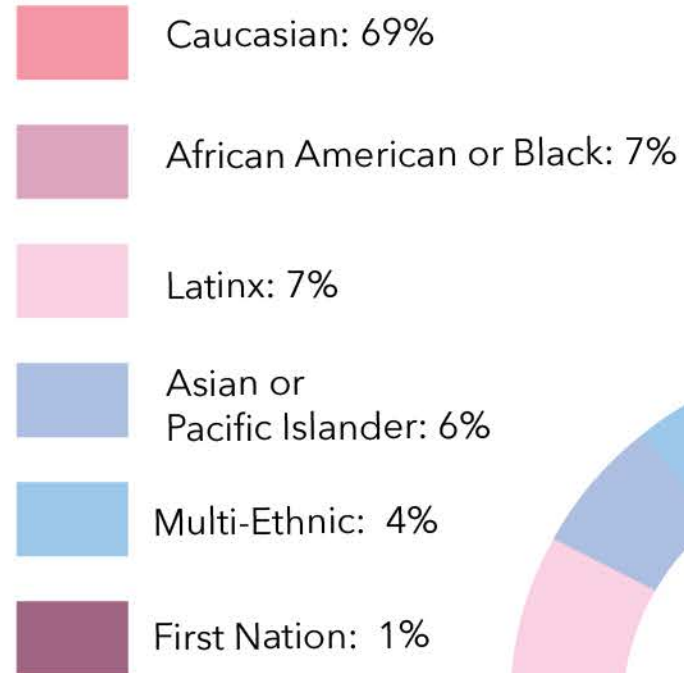
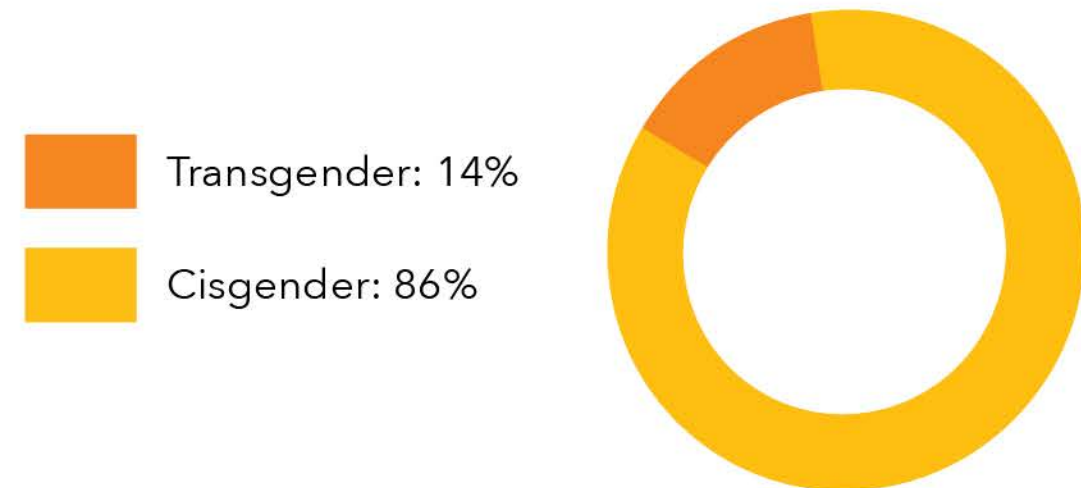
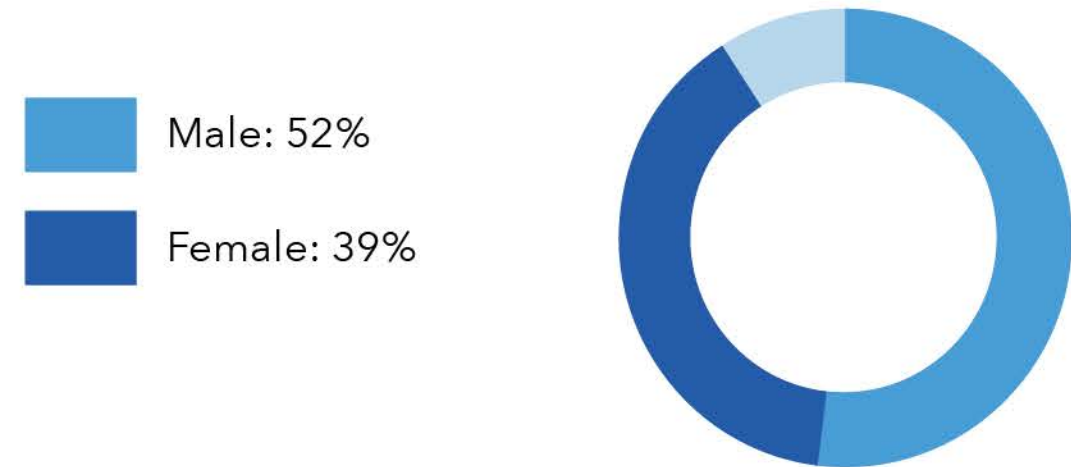
The annual Workplace Summit convenes well over 4,000 leaders and executives from around the world who share strategies and best practices to create lesbian, gay, bisexual, transgender and queer equality, inclusive of all sexual orientations, gender identities and expressions. Leadership Day offers a pre-Summit opportunity to develop in-depth expertise and enhanced best practices for you and your organization. It is a great opportunity for those seeking to expand their knowledge on key workplace equality issues, and/or for those who are unable to attend the full Workplace Summit.

	<b>Presenting</b> \$105,000	<b>Titanium</b> \$85,000	<b>Gold</b> \$65,000	<b>Champion</b> \$40,000	<b>Advocate</b> \$25,000	<b>Premier*</b> \$10,000
<b>Registrations</b>	<b>24</b> complimentary registrations, ticketed events, VIP tickets <b>3</b> executive forum registrations	<b>20</b> complimentary registrations, ticketed events, VIP tickets <b>2</b> executive forum registrations	<b>16</b> complimentary registrations, ticketed events, VIP tickets <b>1</b> executive forum registration	<b>10</b> complimentary registrations, ticketed events, VIP tickets	<b>4</b> complimentary registrations, ticketed events, VIP tickets	<b>2</b> complimentary registrations, ticketed events, VIP tickets
<b>Program Book Advertisement</b>	<b>Full Page</b>	<b>Full Page</b>	<b>Half Page</b>	<b>Half Page</b>	<b>Half Page</b>	<b>Logo Only</b>
<b>Engagement Center</b>	<b>10 x 30</b>	<b>10 x 20</b>	<b>10 x 20</b>	<b>10 x 10</b>	<b>10 x 10</b>	<b>N/A</b>
<b>Event Branding Opportunities</b>	General Sessions, Choice of Opening Brunch, Power Lunch or Gala Dinner (Assigned by Out & Equal, may be co-branded), Video Reel and Sponsor Wall	Engagement Center, Women's Leadership Breakfast, Executive Lunch, Government Breakfast, Board Meet and Greet, VIP Reception, Gala Reception, Featured Panel, Video Reel and Sponsor Wall	Educational Track, Summit Orientation, Night Out, Leadership Day Breakfast, Leadership Day Lunch, Video Reel and Sponsor Wall	Leadership Day Seminar or Workshop Branding, Video Reel and Sponsor Wall	Video Reel & Sponsor Wall	Video Reel & Sponsor Wall

Ask your Out & Equal Corporate Engagement Manager about multi-year incentives.  
For additional information email [partnerships@outandequal.org](mailto:partnerships@outandequal.org).

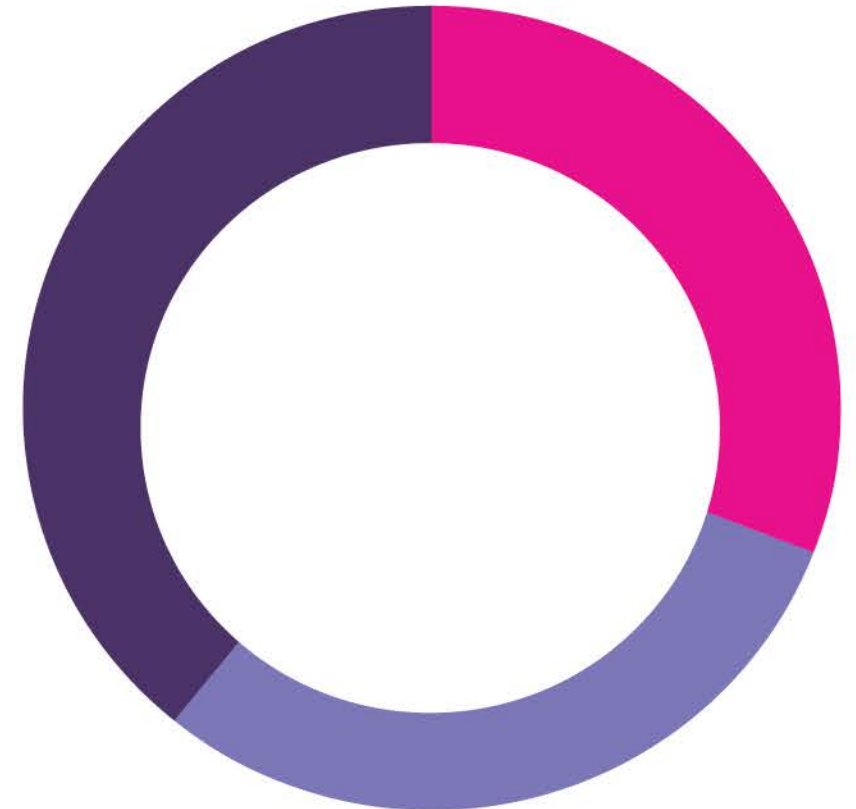
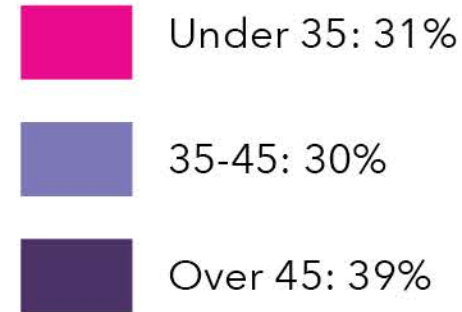
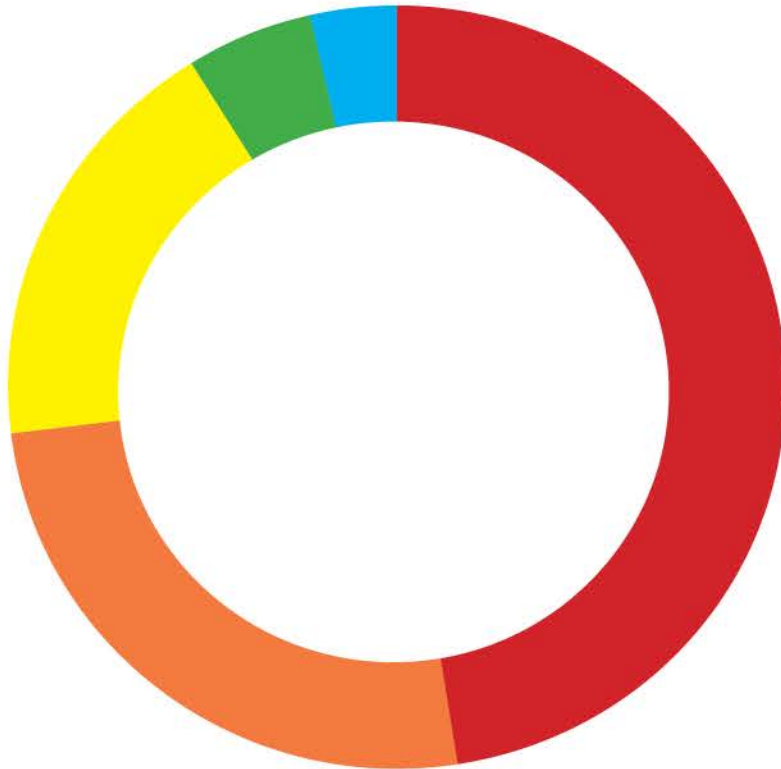
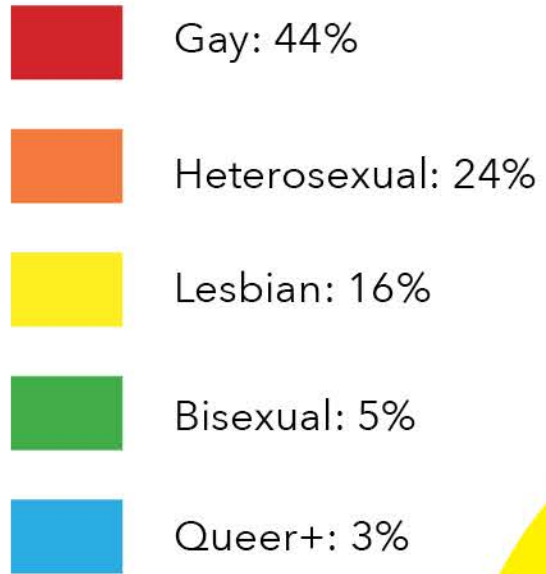
\*Premier sponsorship available to first-time sponsors only

# 2017 Summit Demographics





# 2017 Summit Demographics



# 2017 Summit Demographics



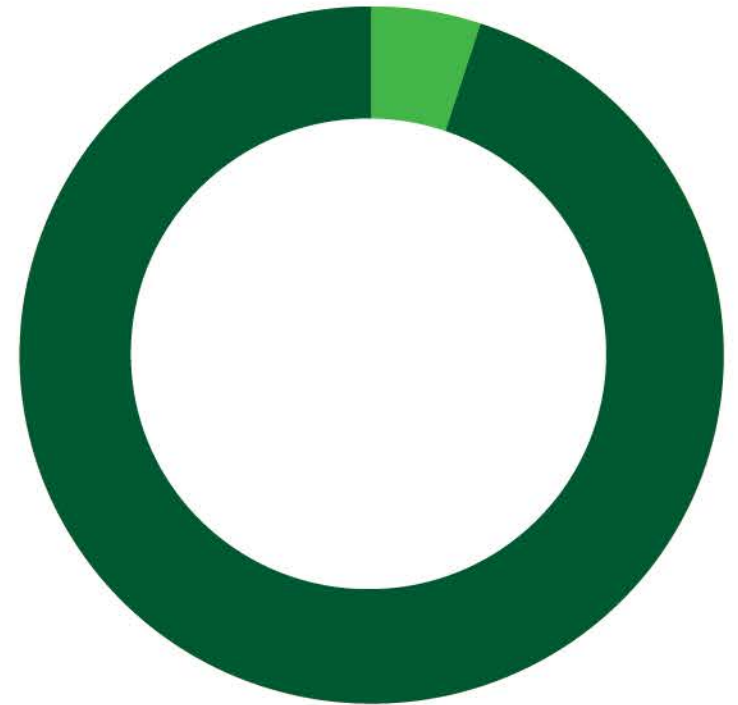
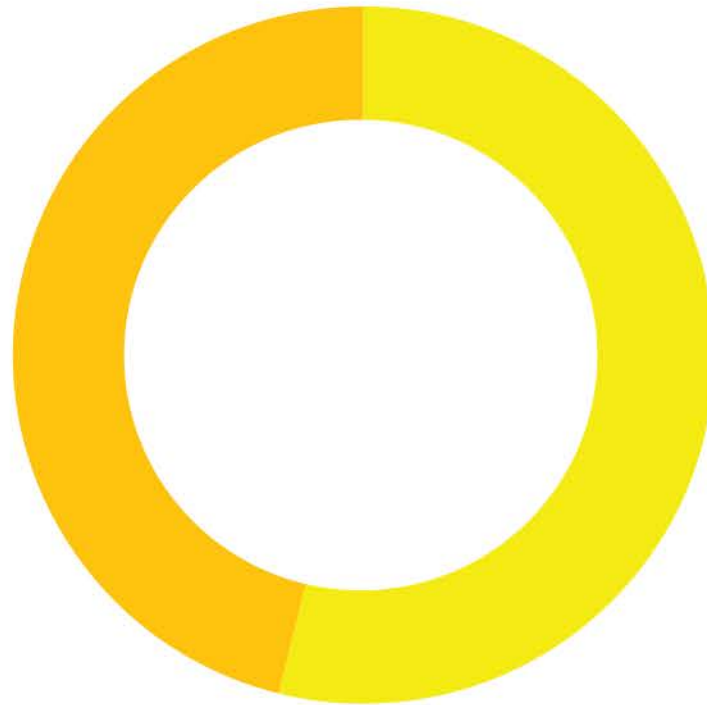
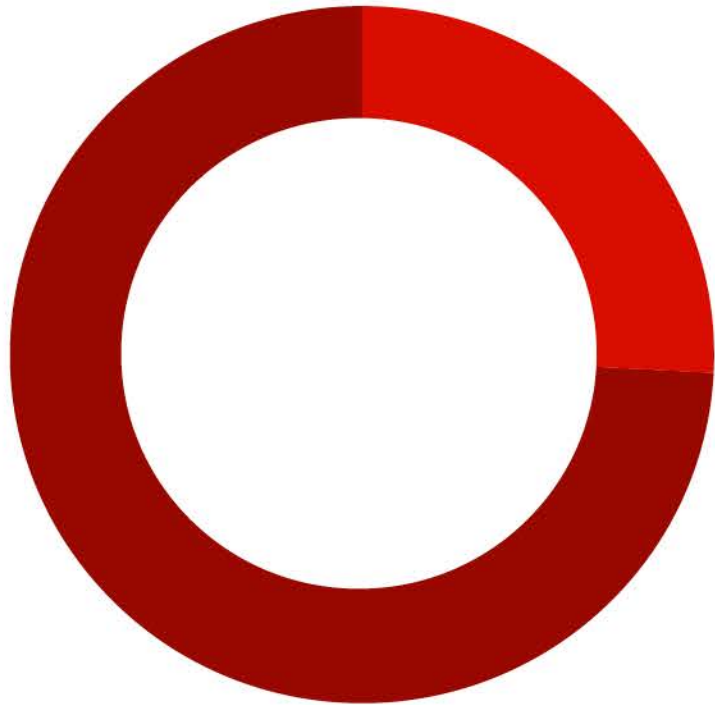
Allies: 26%



New to Summit: 54%

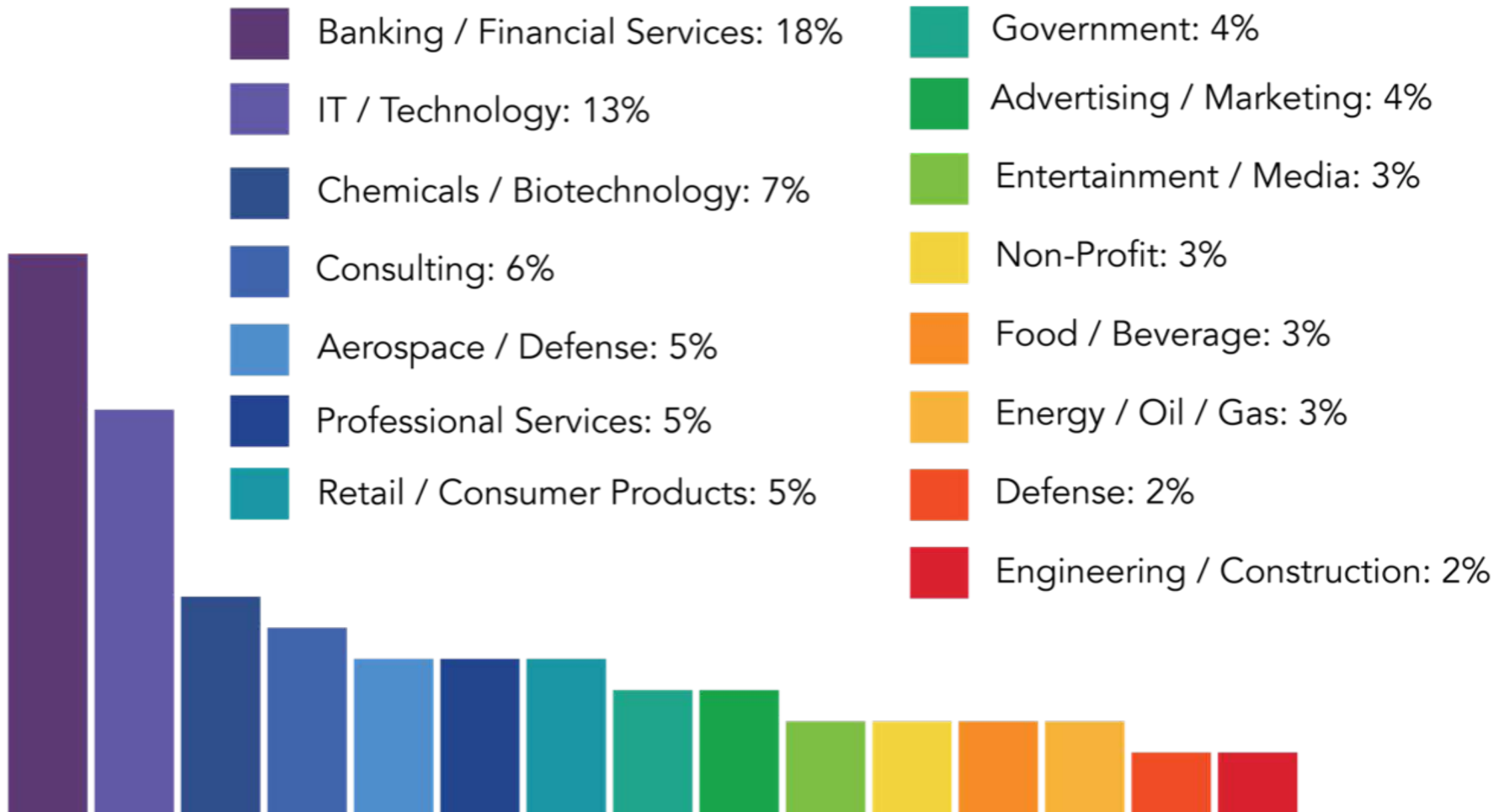


Military Veterans: 5%





# Representation By Industry &



# Engagement Center

- 77 sponsor booths
- LGBT Career Day (200+ Registrants)
- Exhibitor Branding & Visibility





# Featured Panel Opportunities

Allies



JPMORGAN  
CHASE & CO.



Intersectionality



Global



Transgender  
Leadership



LGBT SWAT Team:  
Navigating Policy in the  
New Political Climate

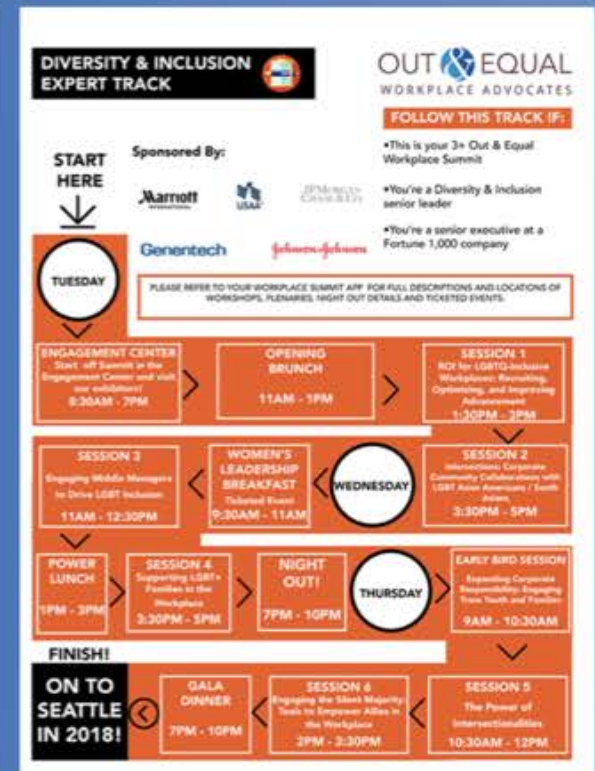
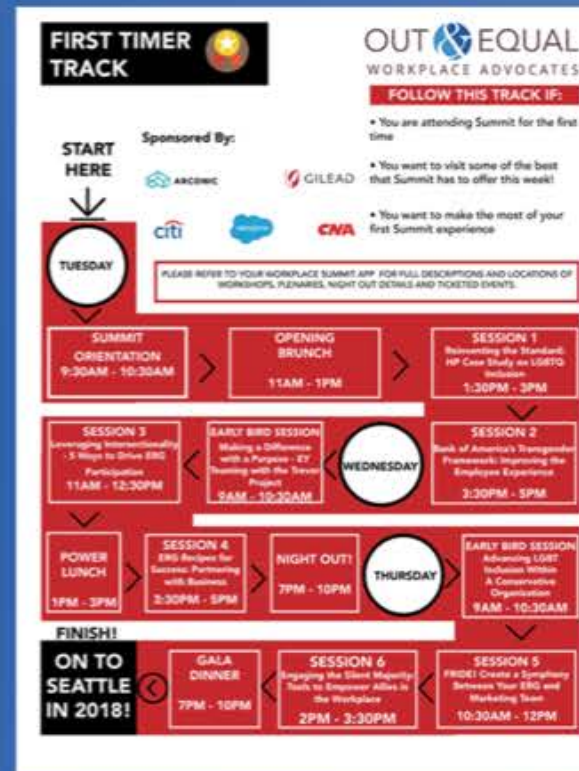
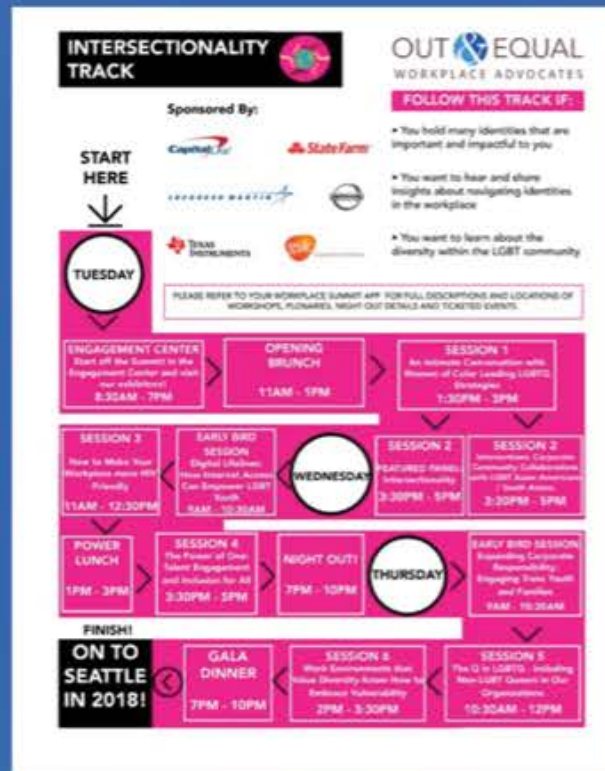
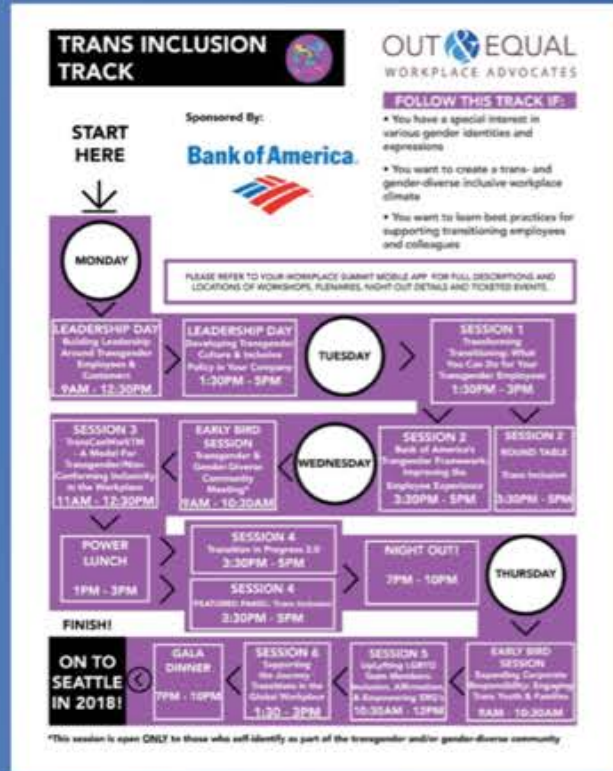


Marketing





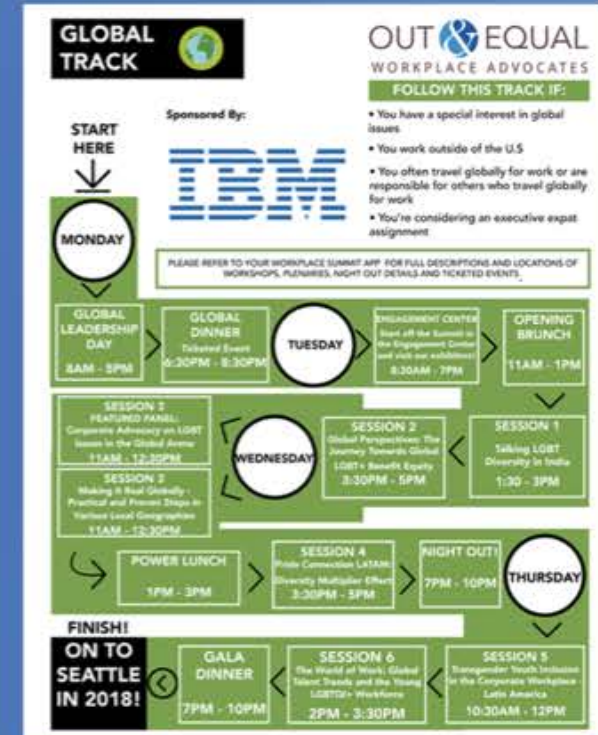
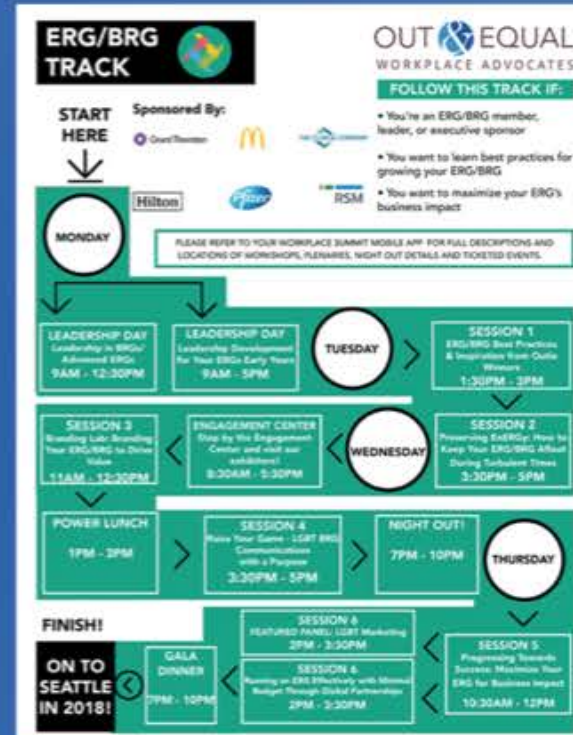
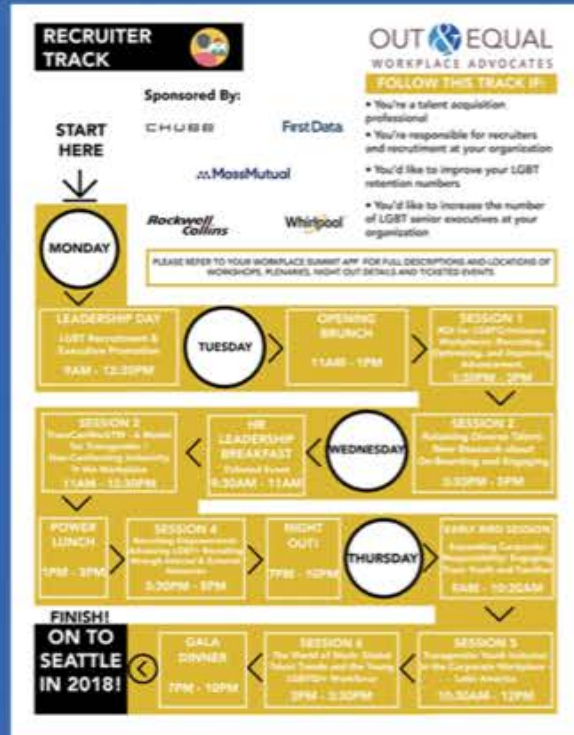
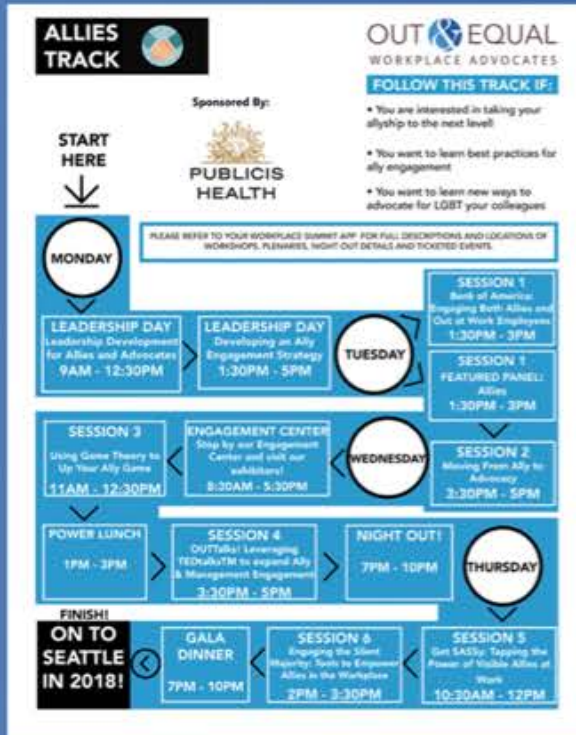
# WORKSHOP TRACKS



The use of this seal confirms that this activity has met HR Certification Institute's® (HRCI®) criteria for recertification credit pre-approval. For further information, please email [iporras@outandequal.org](mailto:iporras@outandequal.org).



# WORKSHOP TRACKS



The use of this seal confirms that this activity has met HR Certification Institute's® (HRCI®) criteria for recertification credit pre-approval. For further information, please email [iporras@outandequal.org](mailto:iporras@outandequal.org).

# INTRODUCING WORKSHOPS

---



**Isabel Porras**

Out & Equal University Director  
Out & Equal Workplace Advocates

#OESummit | @outandequal

OUT & EQUAL  
WORKPLACE ADVOCATES



# CALL FOR PROPOSALS

---

- ▶ Now open-access via Summit Page
- ▶ Benefits of Presenting
  - & Discounted registration
  - & Private presenter lounge
  - & Opportunities to network with other presenters
  - & Visibility for your company
  - & Recognition as an industry thought leader



#OESummit | @outandequal

OUT & EQUAL  
WORKPLACE ADVOCATES

# SUMMIT EDUCATION COMMITMENTS

---

Peer-to-Peer Education

Commitment to Diversity

Focus on LGBTQ Workplace Equality



#OESummit | @outandequal

OUT & EQUAL  
WORKPLACE ADVOCATES

# CALL FOR PROPOSALS

---

## Session Types

- ▶ Workshop
- ▶ Presentation
- ▶ Panel
- ▶ TED-like Talk
- ▶ Roundtable Discussion
- ▶ Other



#OESummit | @outandequal

OUT & EQUAL  
WORKPLACE ADVOCATES



# CALL FOR PROPOSALS

## Areas of Focus

- ▶ Allies
- ▶ Global
- ▶ Intersectionality
- ▶ Talent Acquisition & Retention
- ▶ Bisexual+
- ▶ General
- ▶ Transgender & Gender-Expansive
- ▶ Professional Development & Executive Leadership
- ▶ ERG/BRG
- ▶ Queer
- ▶ Law, Policy, & Benefits



#OESummit | @outandequal

OUT & EQUAL  
WORKPLACE ADVOCATES

# HOW TO GET ACCEPTED

## SUCCESSFUL PROPOSALS INCLUDE:

- & Outline of the Presentation
- & Clear Audience Takeaways
- & Method of Audience Interactivity
- & Explanation of Material Hand-outs
- & Primary Contact to Collect All Speaker Information
- & Background of Presenters & Organization with Subject Matter



#OESummit | @outandequal

OUT & EQUAL  
WORKPLACE ADVOCATES



# HOW TO GET ACCEPTED

---



Relate Content to  
Workplace Equality



Provide Concrete,  
Substantive Takeaways



Include Diverse Voices



Present a New  
Workshop



Present Dynamically

#OESummit | @outandequal

OUT & EQUAL  
WORKPLACE ADVOCATES



# HELP SHAPE SUMMIT!

---

We are actively seeking to increase the diversity of our attendees and speakers through our call for proposals. Here are some ways you can help us build a more inclusive Summit:

- & Recommend appropriate speakers for featured panels
- & Suggest to potential speakers that they submit a proposal for Summit
- & Forward our CFP to relevant ERGs and stakeholders with the message that we are looking for a diverse speaker roster
- & Organizing public-speaking training and practice events at your company



\*This diversity statement was formed from the example licensed by O'Reilly Media <http://assets.en.oreilly.com/1/eventprovider/1/ConfDiversity.pdf> under the Creative Commons Attribution 3.0 United States License.

OUT & EQUAL  
WORKPLACE ADVOCATES

# KEY DATES & DEADLINES

---

- ▶ March 22 | Online Proposal Submission Opens
- ▶ May 18 | Proposal Submission Deadline
- ▶ June 11 | Notification of Acceptance or Rejection of Proposals
- ▶ August 16 | Workshop Presenter Town Call



#OESummit | @outandequal



# Outie Awards



**LGBTQ ERG OF THE YEAR  
AWARD**



**CHAMPION OF THE YEAR  
AWARD**



**WORKPLACE EXCELLENCE  
AWARD**

Outie Nomination Forms - [outandequal.org/the-2018-outie-awards](https://outandequal.org/the-2018-outie-awards)

#OESummit | @outandequal

OUT & EQUAL  
WORKPLACE ADVOCATES



# The 2018 Outie Categories

## LGBTQ Employee Resource Group of the Year

This award recognizes a particular employee resource group (ERG) that has a proven track record of success in advocating for LGBTQ equal rights in its workplace.

[Nominate an ERG](#)

## Champion Award

The Champion Award recognizes any LGBTQ person or ally who has made a significant contribution to advancing workplace equality. The Champion Award winner will have shown a unique commitment to LGBTQ workplace rights and will have used their talents to further that cause, even if at some risk.

[Nominate a Champion](#)

## Workplace Excellence

This award recognizes an employer that has a historic and ongoing commitment to pursuing and executing workplace equality for LGBTQ employees in their workplace. This employer has a history of continually raising the bar of workplace equality for others to follow.

[Nominate a Workplace](#)



# CONTACT INFORMATION

---

Workshops: [hello@outandequal.org](mailto:hello@outandequal.org)

Outie Nominations: [kvach@outandequal.org](mailto:kvach@outandequal.org)

Sponsorship: [partnerships@outandequal.org](mailto:partnerships@outandequal.org)

Registration: [registration@outandequal.org](mailto:registration@outandequal.org)

Housing: [ttalbot@outandequal.org](mailto:ttalbot@outandequal.org)



#OESummit | @outandequal

OUT & EQUAL  
WORKPLACE ADVOCATES

Q



A





OUT & EQUAL

2018 WORKPLACE SUMMIT

SEATTLE, WA | OCTOBER 1 - 4



**SEE YOU IN  
SEATTLE!**