



2019 WORKPLACE SUMMIT KICK-OFF CALL

GET THE LATEST UPDATES ON SUMMIT!

OCTOBER 14 - 17 | WASHINGTON DC | GAYLORD NATIONAL RESORT



OUT & EQUAL
2019 WORKPLACE SUMMIT

WELCOME TO OUT & EQUAL'S 2019 SUMMIT KICK-OFF CALL

- This is a broadcast audio call from 12PM - 1PM (PST)
Use speakers or headsets on your computer and turn the volume up!
- Chat in questions and respond to polls during call

Having problems signing in?

Go to www.readytalk.com, "Join a Meeting"
and use access code **6946521**

THIS WEBINAR WILL BE RECORDED AND
AVAILABLE FOLLOWING THE CALL



HOW TO USE & SHARE THIS CALL

- **ARCHIVED:** [OUTANDEQUAL.ORG/EVENT/2019SUMMIT](https://outandequal.org/event/2019summit)
- **REFERENCE POINT FOR:**
 - KEY DATES & DEADLINES
 - REGISTRATION INFORMATION
 - WORKSHOPS
 - OUTIE AWARDS
 - OUT & EQUAL CONTACT LIST
- **CONSIDER SHARING WITH YOUR COMPANY'S
SUMMIT PLANNING TEAM**



SUMMIT KICK-OFF CALL AGENDA

● WHAT'S NEW IN 2019

● REGISTRATION

● HOUSING

● OUTIES

● SPONSORSHIP

● WORKSHOPS

● OUT & EQUAL
POINTS OF CONTACT

● KEY DATES & DEADLINES

● Q & A



SUMMIT KICK-OFF CALL WELCOME



ERIN URITUS

CHIEF EXECUTIVE OFFICER
OUT & EQUAL

INTRODUCING SUMMIT 2019



KIERA JACKSON

ASSOCIATE DIRECTOR OF EVENTS
OUT & EQUAL

#OESummit | @outandequal

OUT & EQUAL
2019 WORKPLACE SUMMIT

WHAT'S NEW SUMMIT 2019

WE'RE IN
NATIONAL HARBOR!

GAYLORD NATIONAL RESORT

OCTOBER 14
LEADERSHIP DAY

OCTOBER 15 - 17
WORKPLACE SUMMIT



#OESummit | @outandequal



WHAT'S NEW SUMMIT 2019



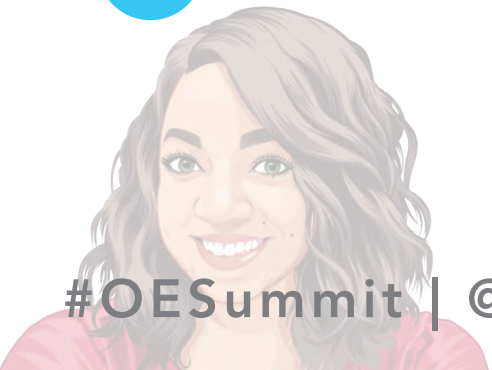
SUMMIT THEME:
BE BOLD! BE BRAVE!
BELONG!



LEADERSHIP DAY:
REGIONALLY FOCUSED
GLOBAL TRACKS



EXECUTIVE FIRESIDE



#OESummit | @outandequal

YOU &
BELONG
HERE

WHAT'S NEW SUMMIT 2019

TICKETED EVENTS



GLOBAL DINNER



SOLOS DINNER

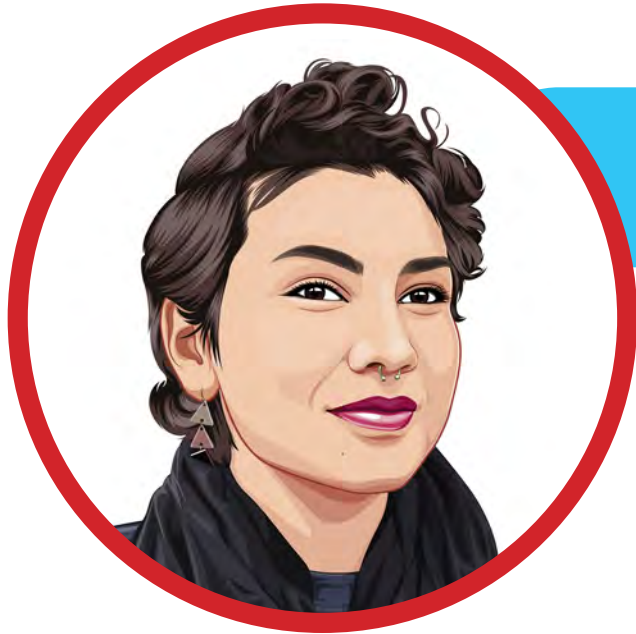


**AFTER THE BLIZZARD:
A SNOWFLAKE FOLLOW-UP**



SPEED NETWORKING BREAKFAST

INTRODUCING SUMMIT REGISTRATION



ANALICIA HAWKINS

EVENTS MANAGER
OUT & EQUAL

WORKPLACE SUMMIT REGISTRATION RATES

FULL CONFERENCE 3-DAY PACKAGE

STANDARD EARLY BIRD: \$1600 GOVERNMENT EARLY BIRD: \$1000

PRESENTER EARLY BIRD: \$800

LEADERSHIP DAY

STANDARD EARLY BIRD: \$250 GOVERNMENT EARLY BIRD: \$125

PRESENTER EARLY BIRD: \$150

THURSDAY ONLY EARLY BIRD: \$750

GALA ONLY EARLY BIRD: \$200

EARLY BIRD RATE: OPEN NOW – JUNE 26TH
REGULAR RATE: JUNE 27TH – SEPTEMBER 27TH
FINAL RATE: SEPTEMBER 28TH – OCTOBER 14TH

2019 Out & Equal Workplace Summit Registration

Email Address*

Discount Code

(If you have been given a discount code please enter it here)

Please select from the following options: *

- Standard Attendee
- Exhibitor Only [\[More Info\]](#)

Continue

* = Required

For quick registration, contact Registration@OutandEqual.org. Please note that if your company requires that you make a payment via check or bulk payments, you will need to email SM@OutandEqual.org to pre-pay for your registration. You will be issued a code which can be used to settle your balance online in the registration process.

Please allow 24-48 hours to issue your pre-paid code. You will need this before starting your registration.



2019 WORKPLACE SUMMIT

Welcome

Attendee Information

Ticketed Events

Additional Attendees

Registration Record

* = Required Field

Please select from the following options: *

- Full Conference \$1,600.00 [\[More Info\]](#)
- Full Conference + Leadership Day \$1,850.00 [\[More Info\]](#)
- Leadership Day Only \$250.00 [\[More Info\]](#)
- Thursday Only \$750.00 [\[More Info\]](#)
- Gala Dinner Only \$200.00 [\[More Info\]](#)

Continue



2019 WORKPLACE SUMMIT

Welcome

Attendee Information

Ticketed Events

Registration Record

* = Required Field

October 14, 2019

7:00 pm - 9:00 pm

[\[Clear Selection\]](#)

- Global Dinner \$75.00 [\[More Info\]](#)
- Solos Dinner \$75.00

October 16, 2019

8:30 am - 10:30 am

[\[Clear Selection\]](#)

- After the Blizzard: A Snowflake Follow-Up \$50.00 [\[More Info\]](#)
- Speed Networking Breakfast \$50.00 [\[More Info\]](#)

6:00 pm - 7:30 pm

Live Auction

Continue



Leadership Day Courses

More sessions to come!

Note: This year we will be offering Leadership Day courses both in the morning and again in the afternoon. Please ensure that you do **NOT** select the same session for the morning and afternoon as this means you will be repeating the first session.

Morning Session (9:30am - 12:30pm)

Please select the course which you would like to attend. [\[Clear Selection\]*](#)

- LGBTQ Marketing 101
- ERG Success- Start Local, Grow Global
- Intersectional Ally Skill-Building
- Building Q-mmunity: Engaging Queer Identities at Work
- Leadership in Advanced ERGs/BRGs
- Developing Ally Engagement Strategies
- Inclusive Leadership Practices
- LGBTQ Workplace Advocacy in Latin America
- LGBTQ Workplace Advocacy in India
- LGBTQ Workplace Advocacy in East Asia
- Lobby Day (Part 1)
- I will not be attending a morning session



REGISTRATION OPEN!

REGISTRATION IS NOW **OPEN**
LINK TO REGISTER CAN BE FOUND ON OUR
WEBSITE: [OUTANDEQUAL.ORG](https://outandequal.org)

SUMMIT FAQ IS ALSO AVAILABLE ON OUR
WEBSITE

FOR QUESTIONS OR IF YOU WOULD LIKE
TO **REGISTER A GROUP OF MORE THAN**
10 ATTENDEES, PLEASE CONTACT:
REGISTRATION@OUTANDEQUAL.ORG



#OESummit | @outandequal



INTRODUCING SUMMIT HOUSING



SAM MERSTEN

EVENTS MANAGER
OUT & EQUAL

WORKPLACE SUMMIT HOUSING ACCOMMODATIONS



**GAYLORD NATIONAL RESORT
& CONVENTION CENTER**

ANCHOR PROPERTY

LINK TO BOOK: [BIT.LY/2HG11RS](https://bit.ly/2HG11RS)



**RESIDENCE INN BY MARRIOTT
NATIONAL HARBOR WASHINGTON**

OVERFLOW PROPERTY

LINK TO BOOK: [BIT.LY/2HEX9WU](https://bit.ly/2HEX9WU)



**THE WESTIN WASHINGTON
NATIONAL HARBOR**

OVERFLOW PROPERTY

LINK TO BOOK: [BIT.LY/2XNSV7C](https://bit.ly/2XNSV7C)

NATIONAL HARBOR

2019 OUT & EQUAL WORKPLACE SUMMIT



HOUSING MAP

-  GAYLORD NATIONAL RESORT & CONVENTION CENTER (ANCHOR) | 201 WATERFRONT STREET, NATIONAL HARBOR, MD 20745
-  RESIDENCE INN BY MARRIOTT NATIONAL HARBOR WASHINGTON (0.1 MILES) | 192 WATERFRONT ST, NATIONAL HARBOR, MD 20745
-  THE WESTIN WASHINGTON NATIONAL HARBOR (0.2 MILES) | 171 WATERFRONT ST, NATIONAL HARBOR, MD 20745

WORKPLACE SUMMIT BOOKING HOUSING

LINK TO SUMMIT HOUSING: [BIT.LY/2TYVS8S](https://bit.ly/2TYVS8S)

- ROOMS **VARY** BY PROPERTY
 - **LIMITED** NUMBER OF **GOVERNMENT ROOMS**
 - DELEGATIONS **EXCEEDING 10 PEOPLE** CAN REQUEST A GROUP HOUSING BLOCK MANAGED BY OUT & EQUAL
- CONTACT: HOUSING@OUTANDEQUAL.ORG**



2019 SUMMIT OUTIE AWARDS

SUBMISSIONS DUE JUNE 14TH

- ALLY CHANGEMAKER
- ERG LEGACY
- LGBTQ COMMERCIAL OF THE YEAR
- LGBTQ CORPORATE ADVOCATE OF THE YEAR
- NEW ERG CHAPTER OF THE YEAR
- WORKPLACE EXCELLENCE

#OESummit | @outandequal



INTRODUCING SUMMIT SPONSORSHIP



ALYSSA JARVIS

CORPORATE ENGAGEMENT MANAGER
OUT & EQUAL

THANK YOU TO OUR SPONSORS!

HOST CITY



PRESENTING



NORTHROP GRUMMAN



The **WALT DISNEY** Company

GOLD



Deloitte.



TOYOTA



CHAMPION



CHUBB



ORACLE



T.RowePrice



GLOBAL LEADERSHIP PARTNER
JPMORGAN CHASE & Co.

ADVOCATE

aetna®



CBRE



CNA



Genentech
A Member of the Roche Group



intuit.



protiviti®
Face the Future with Confidence.



VISA

Western Digital.

PREMIER



Willis Towers Watson



GOVERNMENT



CENTRAL
INTELLIGENCE
AGENCY

SUMMIT 2018: 32 COUNTRIES!



Argentina



Armenia



Australia



Brazil



Canada



Chile



China



Colombia



Costa Rica



Czech Republic



France



Germany



Great Britain



India



Ireland



Italy



Japan



Mexico



Netherlands



Nigeria



Panama



Peru



Philippines



Singapore



South Africa



Spain



Sweden



Switzerland



Thailand



Uganda

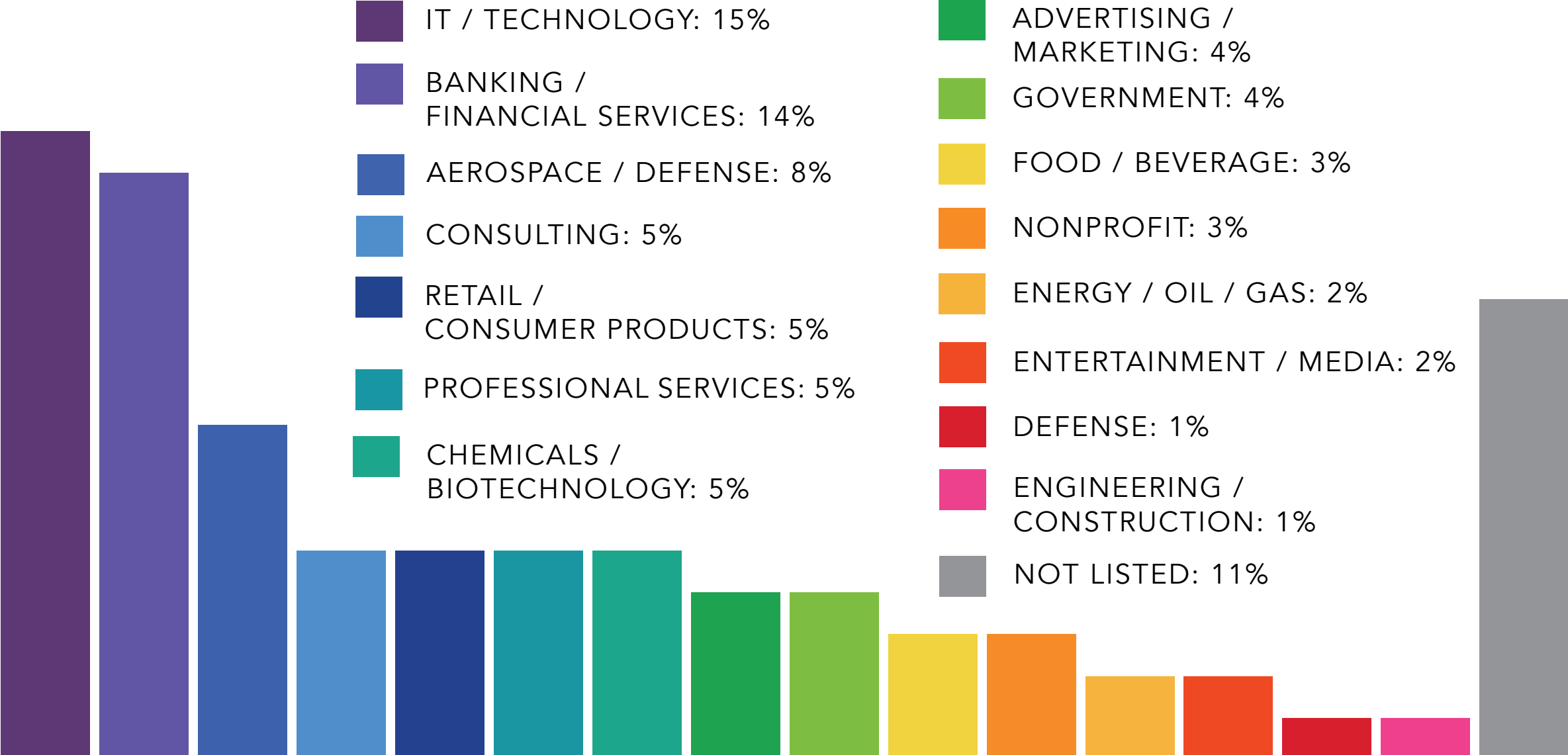


United States

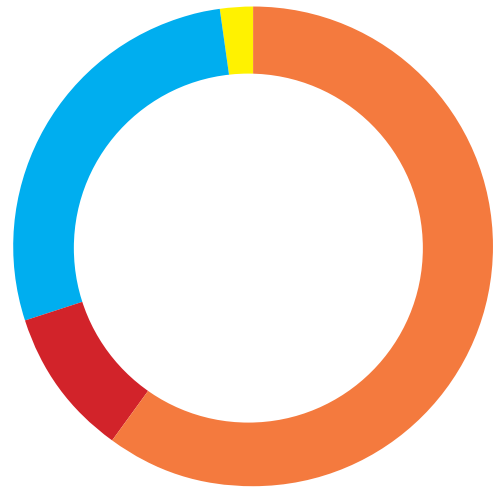


Virgin Islands (UK)

SUMMIT 2018: REPRESENTATION BY INDUSTRY



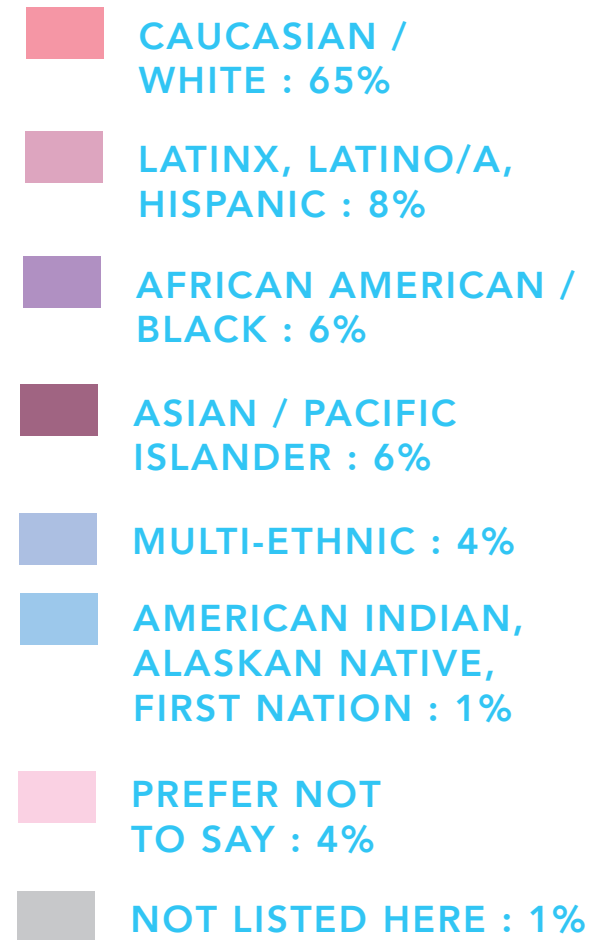
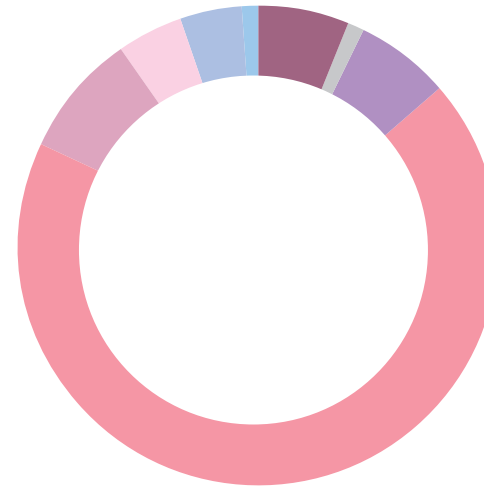
SUMMIT 2018 IN NUMBERS



3% TRANSGENDER



32% UNDER 34 YEARS OLD
58% UNDER 44 YEARS OLD



SUMMIT 2018: TOP 7 SPONSOR DELEGATIONS

Deloitte.

146



64



121

JPMORGAN CHASE & CO.

60



76

Bank of America



56

LOCKHEED MARTIN



SUMMIT EXHIBITORS



SUMMIT 2018: ENGAGEMENT CENTER

SPONSORED BY **TOYOTA**

- ▶ 80 SPONSOR BOOTHS
- ▶ ANDI'S OUTPOST
- ▶ LGBTQ CAREER FAIR

#OESummit | @outandequal





OUT & EQUAL WORKPLACE SUMMIT

WASHINGTON D.C. | OCTOBER 14 - 17, 2019

The 2019 Workplace Summit in Washington, D.C., offers four days of educational opportunities, including over 100 workshops, featured panels, exclusive networking mixers & receptions, inspirational plenaries featuring prominent LGBTQ & ally leaders, as well as amazing celebrity performances.

There are five sponsorship levels for the Workplace Summit, all of which include visibility and educational opportunities. To learn more about sponsorship benefits, multi-year sponsorship benefits, and custom branding opportunities, contact your Out & Equal account manager or e-mail: partnerships@outandequal.org

Presenting	Gold	Champion	Advocate	Premier*
28 complimentary registrations, VIP tickets	22 complimentary registrations, VIP tickets	12 complimentary registrations, VIP tickets	7 complimentary registrations, VIP tickets	3 complimentary registrations, VIP tickets
Full Page Ad & App Profile	Full Page Ad & App Profile	Half Page Ad & App Profile	Half Page Ad & App Profile	Logo Only
10 x 30 Booth	10 x 20 Booth	10 x 10 Booth	10 x 10 Booth	N/A
General Sessions - Opening Brunch, Power Lunch or Gala Dinner (Assigned by Out & Equal, may be co-branded), Night Out	Summit Orientation, Women's Leadership Breakfast, Diversity & Inclusion Breakfast, Government Breakfast, VIP Reception, General Gala Reception, Board Meet & Greet	Summit Workshop Tracks, Leadership Day, Summit Engagement Center, LGBTQ Career Fair	Video Reel & Sponsor Wall	Video Reel & Sponsor Wall

*Premier sponsorship available for first-time sponsors only

INTRODUCING SUMMIT WORKSHOPS



ISABEL PORRAS

O&E UNIVERSITY DIRECTOR
OUT & EQUAL

CALL FOR PROPOSALS

SUBMISSIONS CLOSE APRIL 12TH

NOW **OPEN** ACCESS VIA: [SUMMIT PAGE](#)

● **BENEFITS OF PRESENTING**

- Discounted registration
- Private presenter lounge
- Opportunities to network with other presenters
- Visibility for your company
- Recognition as an industry thought leader

#OESummit | @outandequal



WORKPLACE SUMMIT EDUCATION COMMITMENTS



**PEER-TO-PEER
EDUCATION**



**COMMITMENT
TO DIVERSITY**



**FOCUS ON LGBTQ
WORKPLACE
EQUALITY**

SESSION FORMATS

PANEL: Informed discussion by up to four people, moderated by a chairperson, and with time reserved for audience Q&A.

PRESENTATION: Review of case studies & best practices.

WORKSHOP: Interactive program focusing on active audience participation through hands-on activities and/or discussion.

ROUNDTABLE DISCUSSION: Hosted conversation on topics of common interest

(NEW) BIG IDEAS: 15-minute presentations featuring innovative ideas or inspirational story-telling. (Submit a group of talks or an extended talk as one 60-min session, or an individual talk for 15-min)

AREAS OF FOCUS

Workshops are categorized by topic for review and programming purposes. **Choose up to THREE (3) topics** that best describe the content of your proposed workshop.

Note: Out & Equal may adjust the areas of focus that appear in the final program.

ALLIES

INTERSECTIONALITY

TALENT ACQUISITION &
RETENTION

BELONGING / CULTURE

LAW & PUBLIC POLICY

BISEXUAL+

LEVERAGING
NARRATIVES

TRANSGENDER &
GENDER-
NONCONFORMING

CORPORATE-COMMUNITY
PARTNERSHIPS

LGBTQ MARKETING

WORKPLACE
POLICIES & BENEFITS

ERG / BRG

PROFESSIONAL
DEVELOPMENT &
EXECUTIVE LEADERSHIP

GENERAL

GLOBAL

QUEER



HOW TO GET ACCEPTED

SUCCESSFUL PROPOSALS INCLUDE:

1. OUTLINE OF PRESENTATION
2. CLEAR AUDIENCE TAKEAWAYS
3. METHOD OF AUDIENCE INTERACTIVITY
4. EXPLANATION OF MATERIAL HAND-OUTS
5. PRIMARY CONTACT TO COLLECT ALL SPEAKER INFORMATION
6. BACKGROUND OF PRESENTERS & ORGANIZATION WITH SUBJECT MATTER



HOW TO GET ACCEPTED



RELATE CONTENT
TO WORKPLACE
EQUALITY



PROVIDE
CONCRETE
SUBSTANTIVE
TAKEAWAYS



INCLUDE
DIVERSE VOICES



PRESENT A
NEW WORKSHOP



PRESENT
DYNAMICALLY

#OESummit | @outandequal

HELP SHAPE THE WORKPLACE SUMMIT

We are actively seeking to increase the diversity of our attendees and speakers through our call for proposals. Here are some ways you can help us build a more inclusive Summit:

Forward this CFP to relevant ERGs and stakeholders with the message that we are looking for a diverse speaker roster

Suggest to potential speakers that they submit a proposal for Summit

Organize public-speaking training and practice events at your company

This diversity statement was formed from the example licensed by O'Reilly Media <http://assets.en.oreilly.com/1/eventprovider/1/ConfDiversity.pdf> under the Creative Commons Attribution 3.0 United States License.

SPECIAL CALL FOR LEADERSHIP DAY

OCTOBER 14, 2019 |
WASHINGTON DC

- Leadership Day is a full day of in-depth sessions focused on LGBTQ workplace equality best practices, prior to the Workplace Summit. These half-day sessions are peer-led and provide sufficient time for sharing insights, along with critical discussions and hands-on activities.
- Whether you have previously workshopped a topic and are ready to go beyond a 90-minute overview, or have a particular initiative or program you wish to highlight as a case study, **we invite you to email a brief paragraph outlining your proposed session to university@outandequal.org**
- We are especially, but not exclusively, interested in:
 - ▶ LGBTQ Marketing (Case Studies, Advanced Examples, Global Marketing, ERG Involvement in Marketing, etc)
 - ▶ ERGs (Launching an ERG, Global ERGs, Managing Virtual ERGs, Advanced BRG Issues)
 - ▶ LGBTQ Inclusion in Government Agencies
 - ▶ LGBTQ Workplace Inclusion in Latin America (Can Be Regional or Country-Specific)
 - ▶ LGBTQ Workplace Inclusion in South Asia (Can Be Regional or Country-Specific)
 - ▶ LGBTQ Workplace in East and Southeast Asia (Can Be Regional or Country-Specific)
 - ▶ Talent Acquisition, Retention, Promotion
 - ▶ Corporate Activism and Advocacy

WORKSHOP KEY DATES & DEADLINES

FEB 11

ONLINE PROPOSAL SUBMISSION OPENS

APR 12

PROPOSAL SUBMISSION DEADLINE

MAY 6

NOTIFICATION OF ACCEPTANCE / REJECTION
OF PROPOSAL

AUG 27

WORKSHOP PRESENTER TOWN CALL



#OESummit | @outandequal

CONTACT INFORMATION

HOUSING: HOUSING@OUTANDEQUAL.ORG

OUTIE NOMINATIONS: SMERSTEN@OUTANDEQUAL.ORG

REGISTRATION: REGISTRATION@OUTANDEQUAL.ORG

SPONSORSHIP: PARTNERSHIPS@OUTANDEQUAL.ORG

WORKSHOPS: UNIVERSITY@OUTANDEQUAL.ORG



#OESummit | @outandequal

OUT & EQUAL
2019 WORKPLACE SUMMIT

SUMMIT KEY DATES & DEADLINES

APR 12	WORKSHOP SUBMISSIONS DEADLINE
JUN 14	OUTIE NOMINATION DEADLINE
JUN 26	EARLY-BIRD REGISTRATION DEADLINE
AUG 2	ENGAGEMENT CENTER BOOTH DEADLINE
SEP 28	REGISTRATION RATE CHANGE
OCT 14	LEADERSHIP DAY
OCT 15 - OCT 17	OUT & EQUAL WORKPLACE SUMMIT





OUT & EQUAL
2019 WORKPLACE SUMMIT

SEE YOU IN
NATIONAL HARBOR
